

# XGA20E

Articulated boom lift

## FEATURES

### MEASUREMENTS

20.63m working height  
Up to 256/350kg lift capacity

### PRODUCTIVITY

- 1.83m×0.76m steel platform
- 4 driving wheels
- 2 steering wheels
- 45% theoretical gradeability
- Axle balance system
- Solid rubber tires
- Platform automatic leveling system
- 160° platform rotation
- Fully proportional multi-function controls
- Hydraulic oil cooler
- Drive enable
- Hourmeter record
- Tilt alarm
- Lift and lower alarm
- Drive alarm
- 360° continuous turntable rotation
- Lockable turntable cover
- High/Slow speed mode
- Turntable control box
- Engine status display
- Steering lever control
- Flashing beacon
- Emergency power unit
- 12V DC emergency power

### POWER

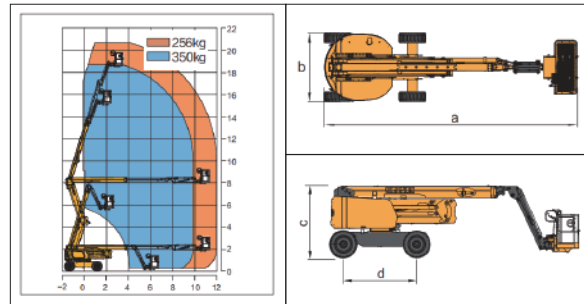
- Engine protection devices
- Kubota Euro stage V emission

## OPTIONS

- Foam-filled rough terrain tires
- Hydraulic oil cooler
- Tool tray
- Platform working light
- AC power to the platform
- Platform anti-collision device



Work Curve Graph



Item	Unit	XGA20E
Working Height	m	20.63
Platform Height	m	18.63
Working radius	m	12.08
Lift capacity	kg	256/350
1st Boom luffing range	°	0~+72
2nd Boom luffing range	°	0~+73
Fly jib luffing range	°	-65~+70
Turntable rotation	°	360
Platform rotation	°	160
Tailswing	mm	540
Drive Speed	km/h	5.5
Turning Radius (inside)	m	2.3
Turning Radius (outside)	m	5
Ground clearance	mm	330
Gradeability	%	45
Tires	-	36×14-20 solid tire
Power source	-	Kubota V2403
Rated power	kW(r/min)	36.8/2700
Fuel tank	L	90
Hydraulic tank	L	120
Weight	kg	9900
Platform size	mm	1830×760
a Length	mm	8520
b Width	mm	2300
c Height	mm	2400
d Wheelbase	mm	2500