



xP3800

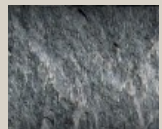
Medium-Heavy Range

Productivity (m3 in 8 hours)

Hard rock, Compact basalt, Limestone.
280min / 830max



Medium-hard rock, Slate, Non-omogeneous granite.
380min / 1130max



Concrete non reinforced stratified limestone, tuff.
580min / 1700max



Technical Specification

Working weight	3820 Kgs
Carrier's weight min/max	37/60 ton
Total height	3215 mm
Tool diameter	170 mm
Useful lenght of standard tools	800 mm
Oil flow min/max	250/300 l/min
Working pressure min/max	180/190 bar
Blows per minute	260/550 1/min
Impact energy	14500 joule

Size Compatibility

