

---

# **E-Crane<sup>®</sup> Capacity Charts**

## **1000 Series**

---

Model 7248

Model 7264

Model 7290

Model 7317

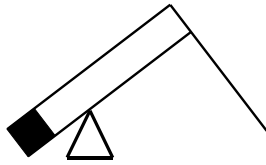
## **Model 7359**

Model 7382

Model 7421

Model 7450





# E-Crane<sup>®</sup> Capacity Charts

## 1000 Series

### Model 7359

## CONTENTS

<b>DUTY CYCLE OPERATION</b> .....	<b>3</b>
<b>Load Chart (USton/ft)</b> .....	<b>3</b>
<b>Load Chart (Mton/m)</b> .....	<b>5</b>
<b>LIFT CRANE OPERATION</b> .....	<b>7</b>
<b>Load Chart (USton/ft)</b> .....	<b>7</b>
<b>Load Chart (Mton/m)</b> .....	<b>9</b>
<b>SPECIFICATIONS</b> .....	<b>11</b>

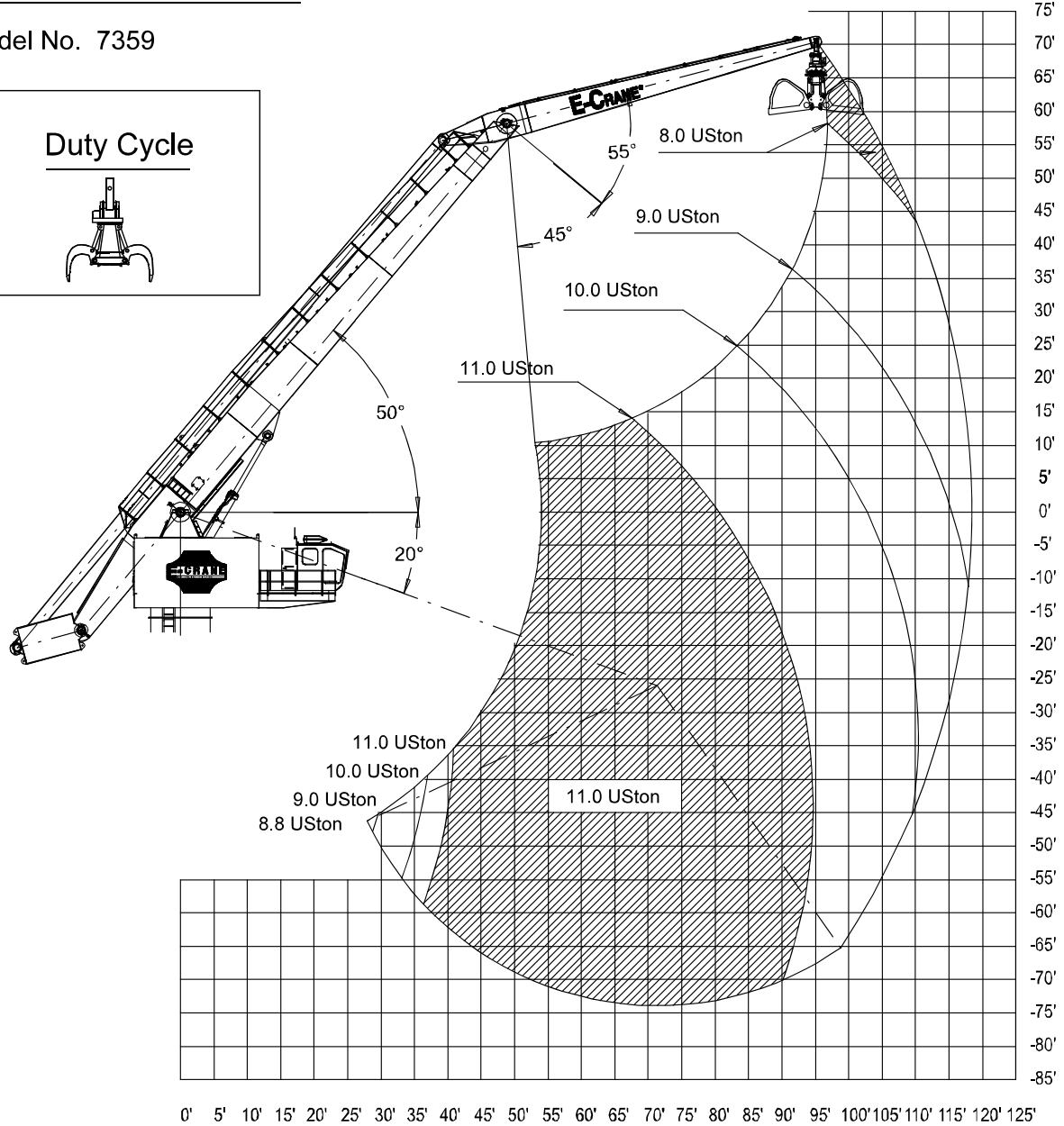
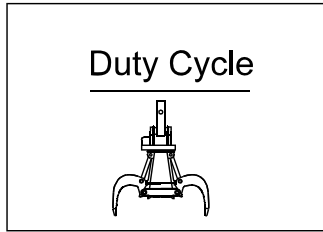


**DUTY CYCLE OPERATION**

**Load Chart (USton/ft)**

**Capacity Chart E-Crane®**

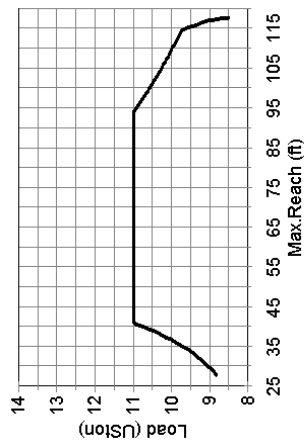
Model No. 7359



Docnr.:ALI2006-009

**CAPACITY CHARTS (USton) / Duty Cycle Operation  
E-Crane 7359**

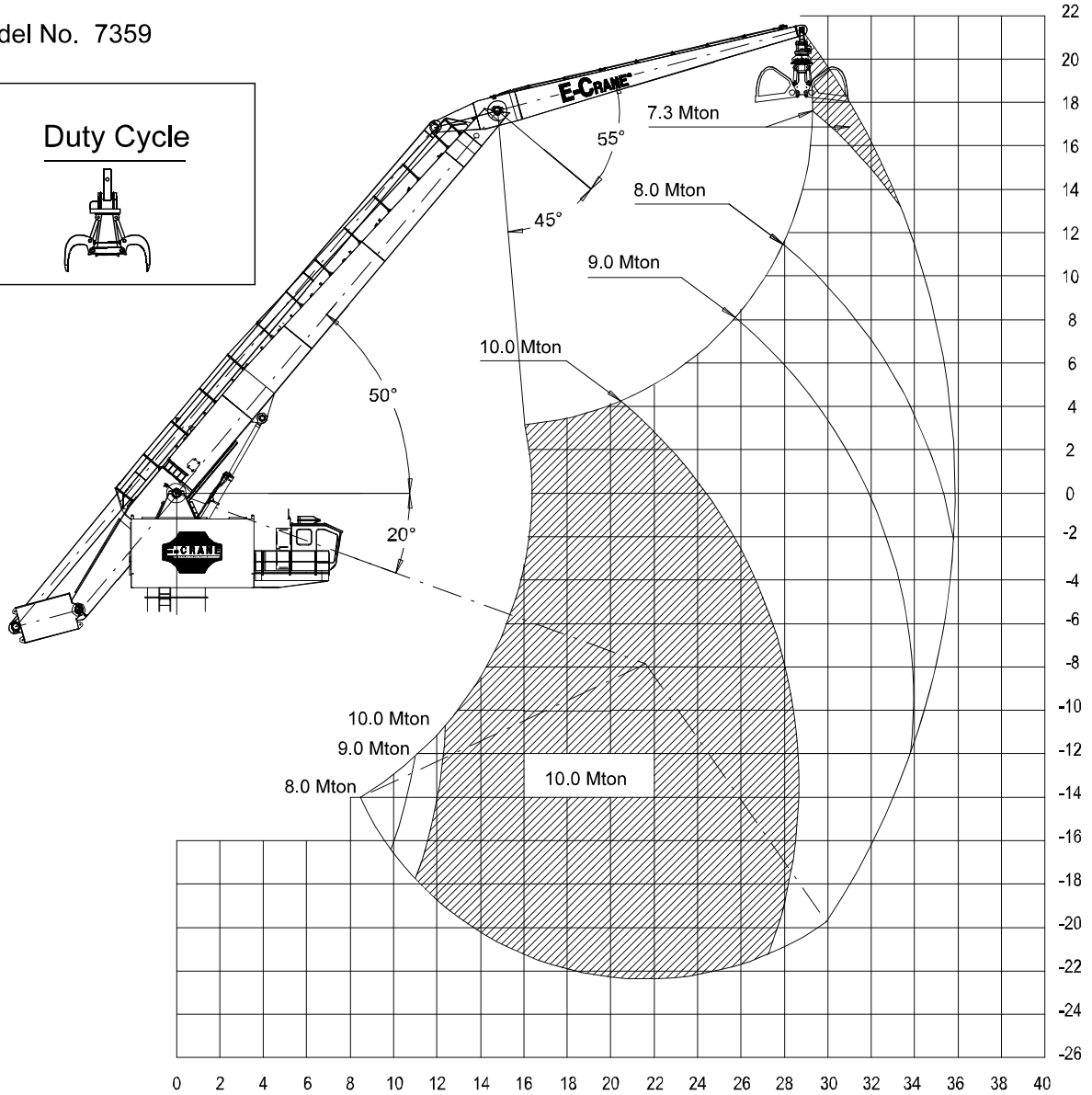
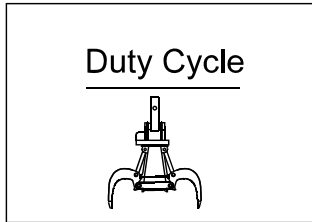
HEIGHT Relative to BOOM- PIN (ft)	REACH (ft)																				
	32	36,5	41	45,5	50	54,5	59	63,5	68	72,5	77	81,5	86	90,5	95	99,5	104	108,5	113	117,5	
64																					
59,5																					
55																					
50,5																					
46																					
41,5																					
37																					
32,5																					
28																					
23,5																					
19																					
14,5																					
10																					
5,5																					
1																					
-3,5																					
-8																					
-12,5																					
-17																					
-21,5																					
-26																					
-30,5																					
-35																					
-39,5																					
-44																					
-48,5																					
-53																					
-57,5																					
-62																					
-66,5																					
-71																					



**Load Chart (Mton/m)**

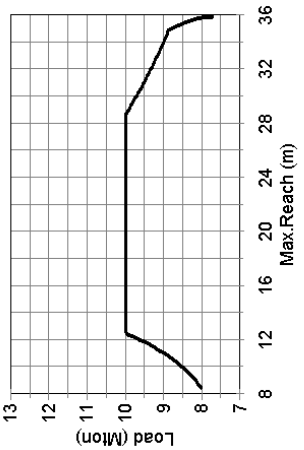
**Capacity Chart E-Crane®**

Model No. 7359



Docnr.:ALI2006-010

CAPACITY CHART (Mton) / Duty Cycle Operation E-Crane 7359		REACH (m)																		
		8,5	10	11,5	13	14,5	16	17,5	19	20,5	22	23,5	25	26,5	28	29,5	31	32,5	34	35,5
18																				
16,5																				
15																				
13,5																				
12																				
10,5																				
9																				
7,5																				
6																				
4,5																				
3																				
1,5																				
0																				
-1,5																				
-3																				
-4,5																				
-6																				
-7,5																				
-9																				
-10,5																				
-12																				
-13,5																				
-15																				
-16,5																				
-18																				
-19,5																				
-21																				

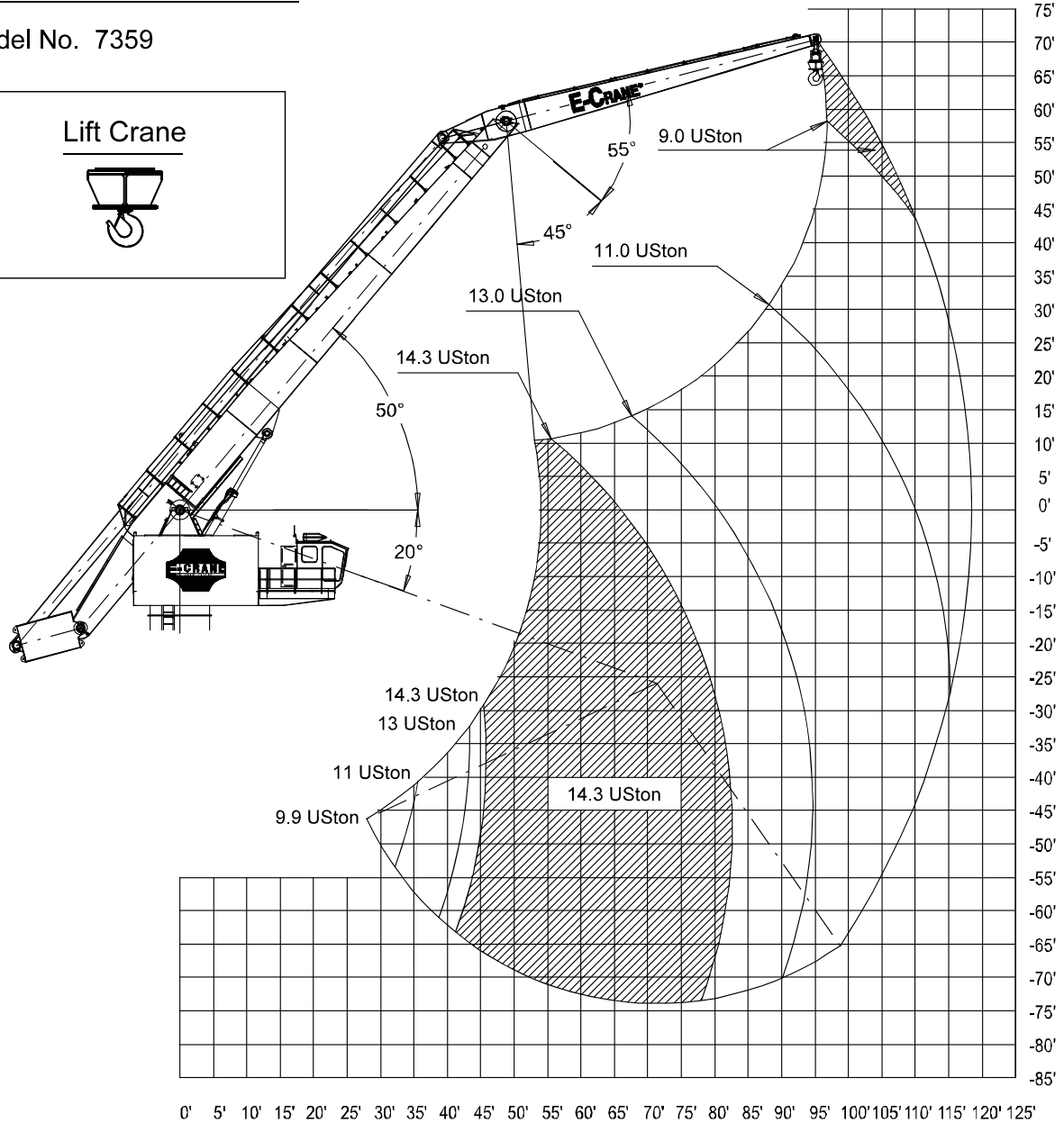
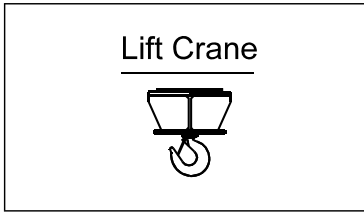


**LIFT CRANE OPERATION**

**Load Chart (USton/ft)**

**Capacity Chart E-Crane®**

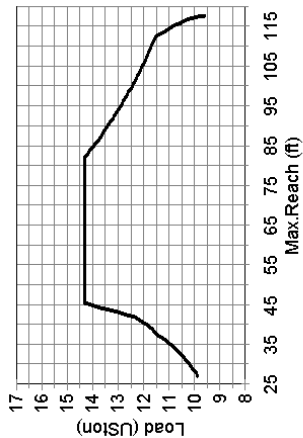
Model No. 7359



Docnr.:ALI2006-011

**CAPACITY CHART (USton) / Lift Crane Operation  
E-Crane 7359**

HEIGHT Relative to BOOM- PIN (ft)	REACH (ft)																				
	32	36,5	41	45,5	50	54,5	59	63,5	68	72,5	77	81,5	86	90,5	95	99,5	104	108,5	113	117,5	
64																					
59,5																					
55																					
50,5																					
46																					
41,5																					
37																					
32,5																					
28																					
23,5																					
19																					
14,5																					
10																					
5,5																					
1																					
-3,5																					
-8																					
-12,5																					
-17																					
-21,5																					
-26																					
-30,5																					
-35																					
-39,5																					
-44																					
-48,5																					
-53																					
-57,5																					
-62																					
-66,5																					
-71																					

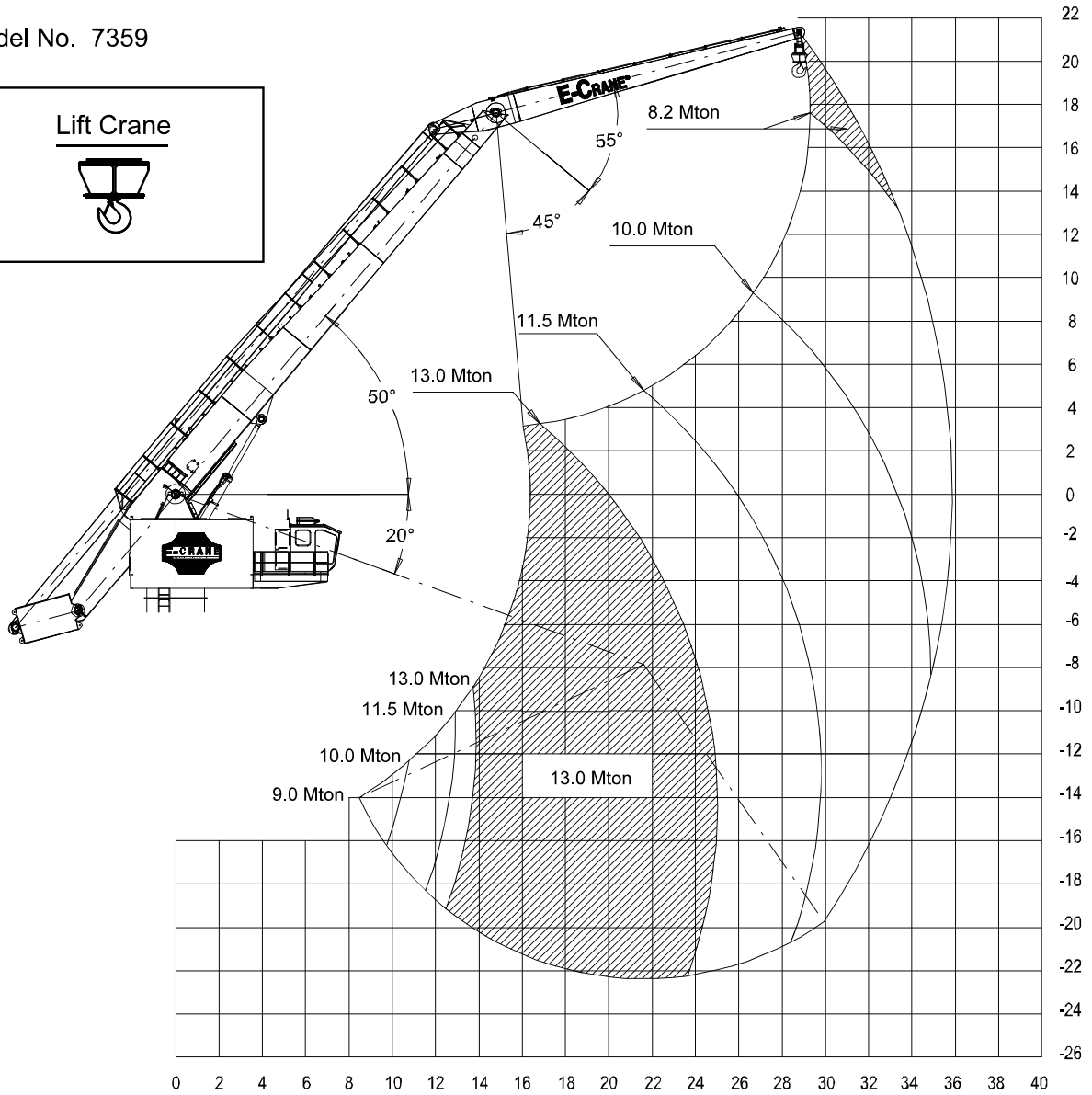
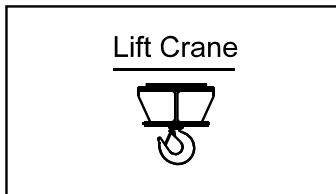




**Load Chart (Mton/m)**

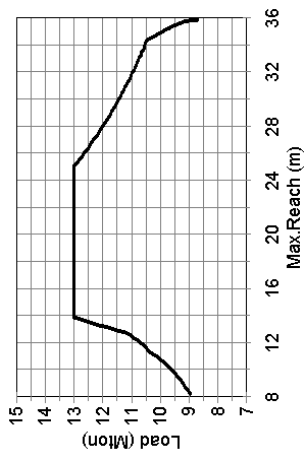
**Capacity Chart E-Crane®**

Model No. 7359



Docnr.:ALI2006-012

		<b>CAPACITY CHART (Mton) / Lift Crane Operation</b>																			
		<b>E-Crane 7359</b>																			
<b>HEIGHT Relative to BOOM- PIN (m)</b>		<b>REACH (m)</b>																			
		8,5	10	11,5	13	14,5	16	17,5	19	20,5	22	23,5	25	26,5	28	29,5	31	32,5	34	35,5	
18																				8,20	8,20
16,5																				8,22	8,20
15																				8,30	8,22
13,5																				8,45	8,30
12																				8,67	8,45
10,5																				9,29	8,98
9															10,14	9,67				9,29	8,91
7,5														10,54	10,27					9,67	9,20
6														11,03	10,85	10,54				10,14	9,57
4,5														11,50	11,28	11,03	10,69			10,51	10,01
3														11,81	11,50	11,28	10,80			10,65	10,41
1,5														11,50	11,28	11,03	10,98			10,76	10,54
0														11,68	11,44	11,22	10,98			10,76	10,54
-1,5														11,88	11,56	11,39	11,12	10,89		10,65	10,48
-3														12,24	11,88	11,56	11,28	11,03	10,76	10,54	9,89
-4,5														12,73	12,24	11,88	11,56	11,28	11,03	10,76	10,54
-6														13,00	13,00	13,00	12,56	12,09	11,75	11,44	11,12
-7,5														13,00	13,00	13,00	12,73	12,32	11,88	11,56	11,22
-9														13,00	13,00	13,00	13,00	12,48	12,09	11,68	11,33
-10,5														13,00	13,00	13,00	13,00	12,48	12,09	11,68	11,33
-12														13,00	13,00	13,00	13,00	12,65	12,17	11,81	11,44
-13,5														13,00	13,00	13,00	13,00	12,82	12,32	11,88	11,50
-15														13,00	13,00	13,00	13,00	12,91	12,40	11,95	11,56
-16,5														13,00	13,00	13,00	13,00	12,91	12,40	11,95	11,56
-18														13,00	13,00	13,00	13,00	13,00	12,48	12,02	11,56
-19,5														13,00	13,00	13,00	13,00	13,00	12,48	12,02	11,56
-21														13,00	13,00	13,00	13,00	13,00	12,48	12,02	11,56



## SPECIFICATIONS

	<b>Specifications English (**)</b>	<b>Specifications Metric (**)</b>
<b>Operating Range:</b>		
Minimum Outreach Range (from centerline of rotation)	27'-9.1/2"	8,471 m
Maximum Outreach (from centerline of rotation)	117'-7.5/8"	35,855 m
Downreach Range (below main boom pivot point)	73'-4.9/16"	22,366 m
Lifting Range (vertical lift)	143'-4.11/16"	43,705 m
Boom Operating Angles (above and below horizontal)	+50°/-20°	+50°/-20°
Stick Operating Angles (befor and after vertical)	+55°/-45°	+55°/-45°
Degrees of Rotation	360° continuous	360° continuous
<b>Power:</b>		
Power Supply	3-Phase 480 Volts AC, 60 Hz	3-Phase 380 Volts AC, 50 Hz
Electrical Motor	250 hp	200 kW
Hydraulic Pump Output		
Implement	211,6 gpm	800 L/min
Swing	64,8 gpm	245 L/min
Hydraulic System Relief Setting	3,990 psi	27.500 kPa
Hydraulic Tank Refill Capacity	489 USgal	1.850 L
<b>Dimensions:</b>		
Boom Length	75'-5.1/2"	23 m
Stick Length	41'-6.7/8"	14,5 m
<b>Total Weight Superstructure*</b>	343,200 lbs	156.000 kg

(\*) Operating weight does not include lubricants, hydraulic oil, bucket and operator

(\*\*) Materials and specifications are subject to change without notice.

See your E-Crane™ dealer for available options.

Alle rechten voorbehouden. Niets uit deze uitgave mag worden veeveelvoudigd, opgeslagen in een geautomatiseerd gegevensbestand, of openbaar gemaakt, in enige vorm of op enige wijze, hetzij elektronisch, mechanisch, door fotocopieën, opnamen of enige andere manier, zonder voorafgaande schriftelijke toestemming van nv Indusign (België).

All rights reserved. No part of this publication may be reproduced, stored in a retrieval system, or transmitted, in any form or by any means, electronic, mechanical, photocopying, recording or otherwise without the written permission of nv Indusign (Belgium).

Alle Rechte vorbehalten. Nachdruck, Aufnahme in ein Retrieval-System, jedwede elektronische, mechanische, fotokopierte, oder andere Übertragung, auch auszugsweise, ist ohne ausdrücklicher, schriftlicher Genehmigung von nv Indusign (Belgien) verboten.

Ce manuel ne peut en aucune façon être copié, sans autorisation écrite du firme nv Indusign (Belgique).