

# **E-Crane<sup>®</sup> Capacity Charts**

## **1500 Series B**

---

Model 11248

Model 11264

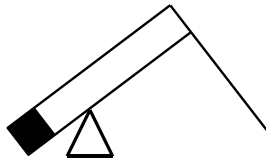
Model 11264 *plus*

## **Model 10290**

Model 9317

Model 9359





E-Crane<sup>®</sup> Capacity Charts  
1500 Series B  
Model 10290

# CONTENTS

<b>DUTY CYCLE OPERATION</b> .....	<b>3</b>
Load Chart (USton/ft) .....	3
Load Chart (Mton/m) .....	5
<b>LIFT CRANE OPERATION</b> .....	<b>7</b>
Load Chart (USton/ft) .....	7
Load Chart (Mton/m) .....	9
<b>SPECIFICATIONS</b> .....	<b>11</b>

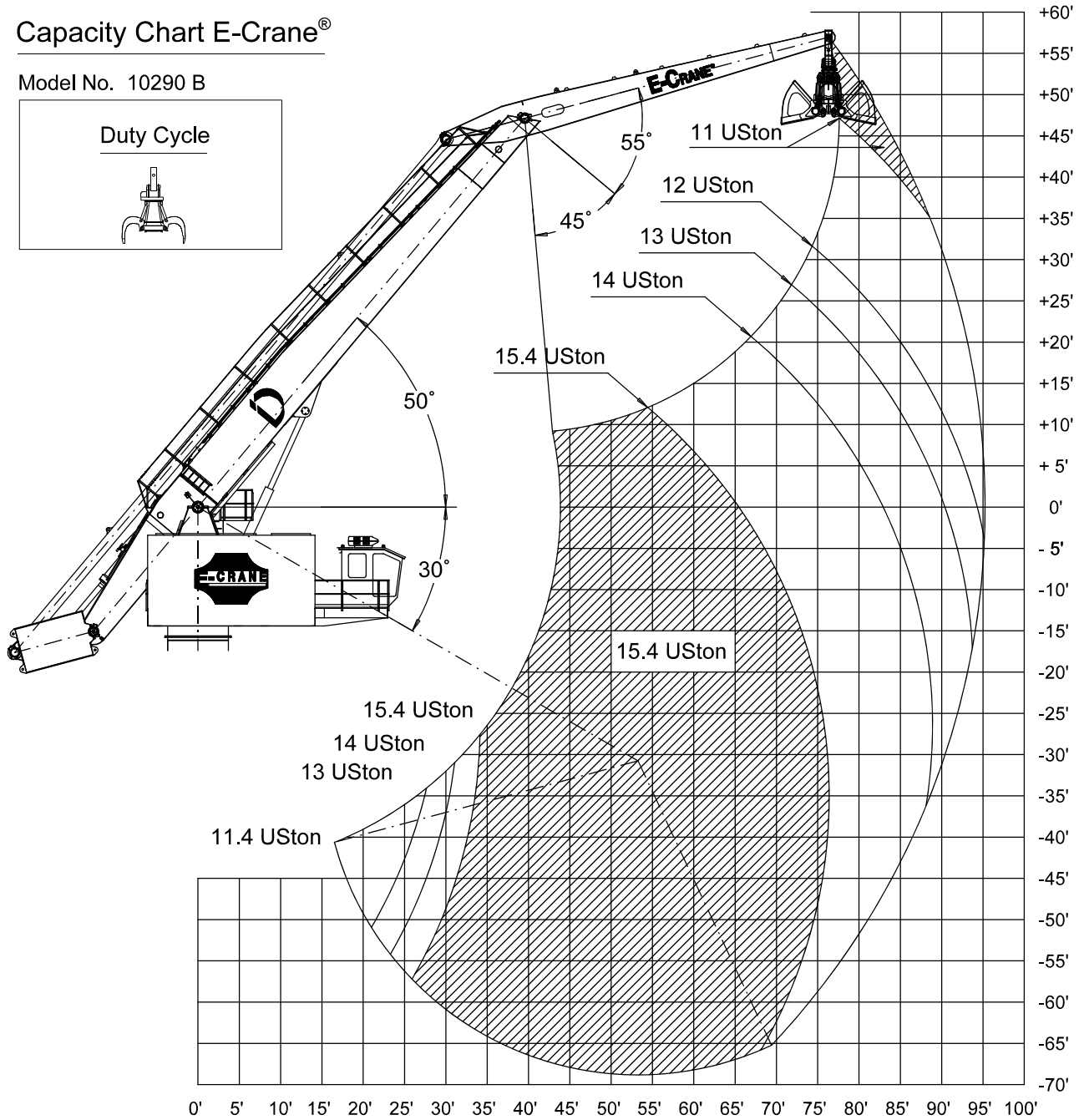
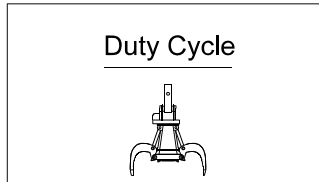


**DUTY CYCLE OPERATION**

**Load Chart (USton/ft)**

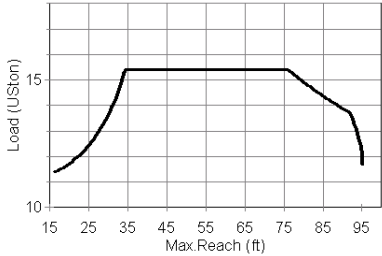
**Capacity Chart E-Crane®**

Model No. 10290 B



Docnr.: ALI2005-024

HEIGHT Relative to BOOM- PIN (ft)	CAPACITY CHART (USton) / Duty Cycle Operation																
	E-Crane 10290 B																
	REACH (ft)																
	20	25	30	35	40	45	50	55	60	65	70	75	80	85	90	95	
45																11,00	
40																11,08	11,00
35																11,34	11,08
30													12,14	11,71	11,29	11,03	
25												12,83	12,14	11,63	11,17		
20											13,90	13,60	12,83	12,04	11,44		
15									14,74	14,38	14,13	13,90	13,60	12,58	11,78		
10							15,40	15,40	15,08	14,74	14,38	14,08	13,82	13,12	12,14		
5						15,40	15,40	15,40	15,40	15,08	14,67	14,33	13,99	13,71	12,58	11,63	
0						15,40	15,40	15,40	15,40	15,40	14,93	14,55	14,17	13,86	13,12	11,86	
-5						15,40	15,40	15,40	15,40	15,40	15,22	14,74	14,33	13,99	13,60	12,14	
-10						15,40	15,40	15,40	15,40	15,40	15,40	15,40	15,00	14,49	14,13	13,75	
-15						15,40	15,40	15,40	15,40	15,40	15,40	15,40	15,15	14,67	14,22	13,82	
-20					15,40	15,40	15,40	15,40	15,40	15,40	15,40	15,40	15,30	14,80	14,33	13,86	
-25					15,40	15,40	15,40	15,40	15,40	15,40	15,40	15,40	15,40	14,87	14,38	13,90	
-30				15,40	15,40	15,40	15,40	15,40	15,40	15,40	15,40	15,40	15,40	14,93	14,38	13,86	
-35			15,29	15,40	15,40	15,40	15,40	15,40	15,40	15,40	15,40	15,40	15,40	14,93	14,33		
-40	12,97	13,27	14,15	15,40	15,40	15,40	15,40	15,40	15,40	15,40	15,40	15,40	15,40	14,87	14,28		
-45	12,14	13,27	14,80	15,40	15,40	15,40	15,40	15,40	15,40	15,40	15,40	15,40	15,40	14,80			
-50		13,77	15,40	15,40	15,40	15,40	15,40	15,40	15,40	15,40	15,40	15,40	15,30	14,61			
-55		14,58	15,40	15,40	15,40	15,40	15,40	15,40	15,40	15,40	15,40	15,40	15,08				
-60			15,40	15,40	15,40	15,40	15,40	15,40	15,40	15,40	15,40	15,40					
-65				15,40	15,40	15,40	15,40	15,40	15,40	15,40	15,40	15,40					

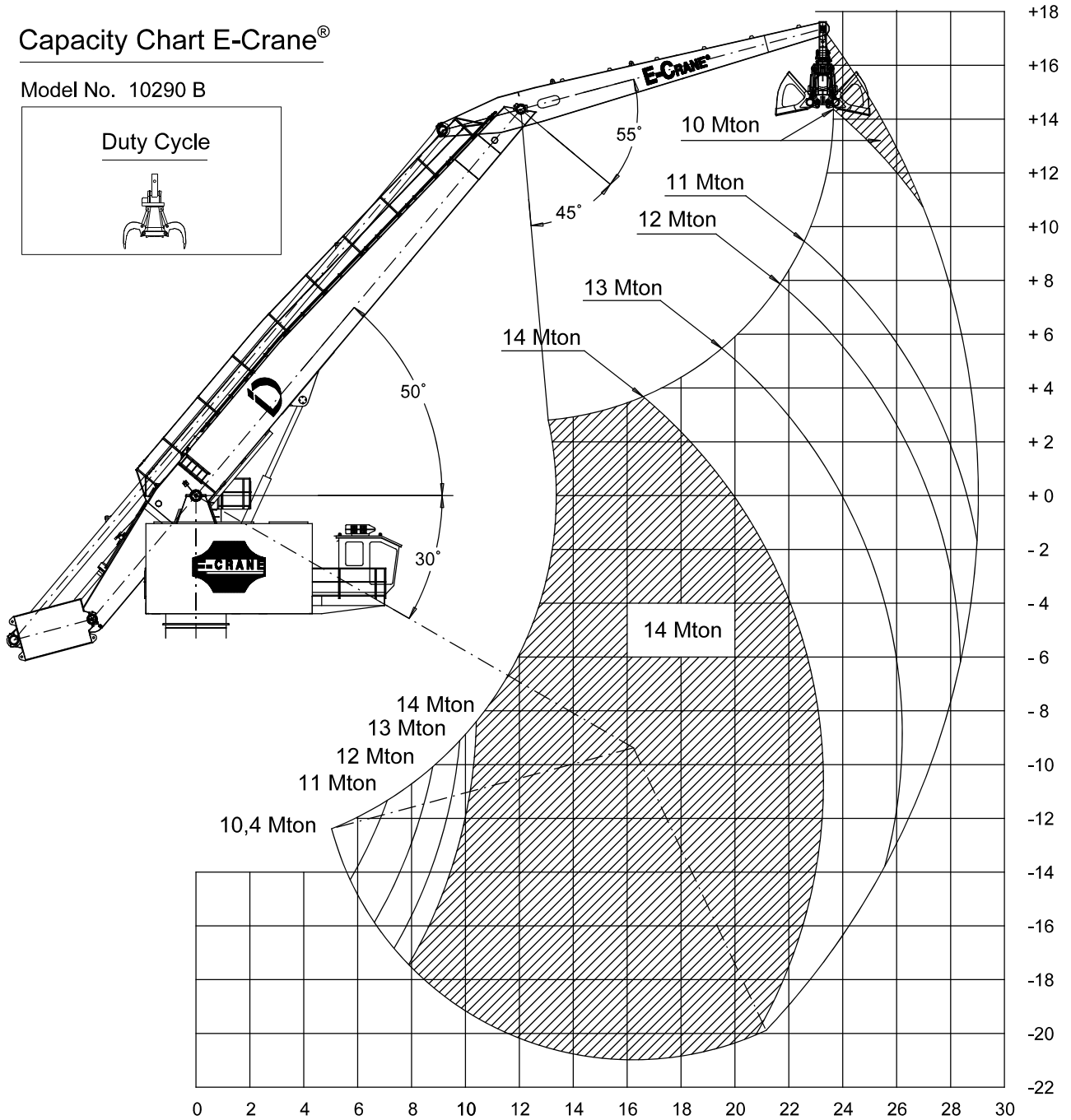
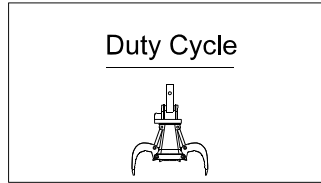


F-Crane® 10290 B

**Load Chart (Mton/m)**

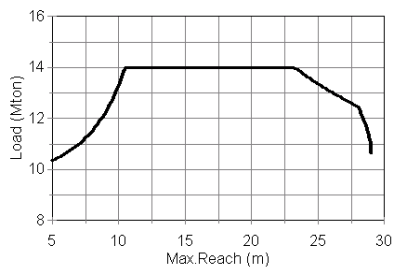
**Capacity Chart E-Crane®**

Model No. 10290 B



Docnr.: ALI2005-025

HEIGHT Relative to BOOM- PIN (m)	CAPACITY CHART (Mton) / Duty Cycle Operation															
	E-Crane 10290 B															
	REACH (m)															
	6,5	8	9,5	11	12,5	14	15,5	17	18,5	20	21,5	23	24,5	26	27,5	29
15														10,00		
13,5														10,00		
12														10,08	10,00	
10,5														10,58	10,31	10,08
9														11,03	10,64	10,26
7,5														11,67	11,03	10,58
6												12,36	11,67	11,03	10,58	10,19
4,5											12,64	12,36	11,55	10,95	10,40	
3									13,34	13,07	12,84	12,60	12,21	11,43	10,71	
1,5							14,00	14,00	13,70	13,34	13,07	12,80	12,56	11,92	11,03	
0						14,00	14,00	14,00	14,00	13,64	13,28	12,98	12,72	12,46	11,43	
-1,5						14,00	14,00	14,00	14,00	14,00	13,98	13,58	13,18	12,89	12,56	11,79
-3						14,00	14,00	14,00	14,00	14,00	14,00	13,77	13,40	13,03	12,72	12,21
-4,5						14,00	14,00	14,00	14,00	14,00	14,00	14,00	13,58	13,18	12,80	12,50
-6						14,00	14,00	14,00	14,00	14,00	14,00	14,00	13,70	13,28	12,89	12,53
-7,5					14,00	14,00	14,00	14,00	14,00	14,00	14,00	14,00	13,84	13,40	12,98	12,60
-9					14,00	14,00	14,00	14,00	14,00	14,00	14,00	14,00	13,98	13,46	13,03	12,60
-10,5			14,00	14,00	14,00	14,00	14,00	14,00	14,00	14,00	14,00	14,00	14,00	13,52	13,03	12,60
-12	12,06	12,21	13,25	14,00	14,00	14,00	14,00	14,00	14,00	14,00	14,00	14,00	14,00	13,52	12,98	
-13,5	11,22	12,21	13,67	14,00	14,00	14,00	14,00	14,00	14,00	14,00	14,00	14,00	14,00	13,98	13,40	
-15	11,67	12,87	14,00	14,00	14,00	14,00	14,00	14,00	14,00	14,00	14,00	14,00	14,00	13,91	13,28	
-16,5		13,46	14,00	14,00	14,00	14,00	14,00	14,00	14,00	14,00	14,00	14,00	14,00	13,70		
-18			14,00	14,00	14,00	14,00	14,00	14,00	14,00	14,00	14,00	14,00	14,00			
-19,5				14,00	14,00	14,00	14,00	14,00	14,00	14,00	14,00	14,00				

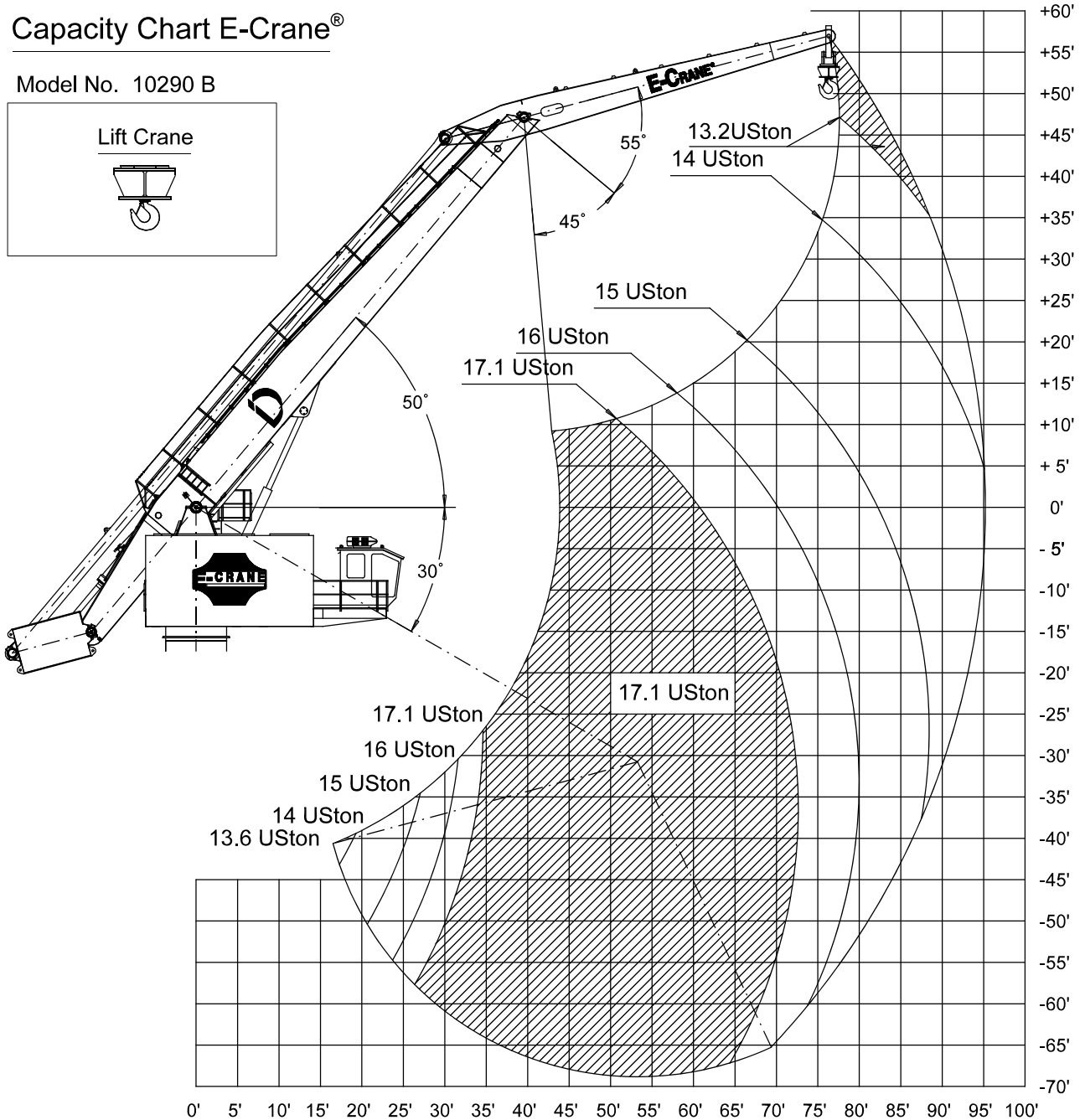
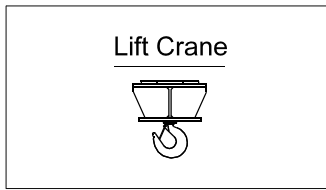


**LIFT CRANE OPERATION**

**Load Chart (USton/ft)**

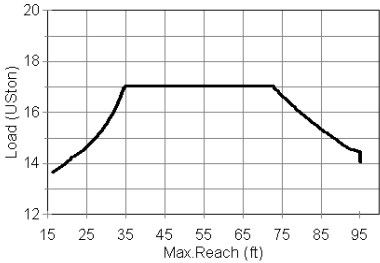
**Capacity Chart E-Crane®**

Model No. 10290 B



Docnr.: ALI2005-026

Relative to BOOM-PIN (ft)	CAPACITY CHART (USton) / Lift Crane Operation															
	E-Crane 10290 B															
	REACH (ft)															
	20	25	30	35	40	45	50	55	60	65	70	75	80	85	90	95
45													13,20			
40													13,30	13,20		
35													13,60	13,30		
30												14,44	14,05	13,55	13,23	
25												14,50	14,44	13,96	13,40	
20											14,84	14,58	14,50	14,43	13,73	
15									15,76	15,37	15,08	14,84	14,58	14,48	14,14	
10							17,05	16,65	16,14	15,76	15,37	15,03	14,75	14,52	14,44	
5						17,05	17,05	17,05	16,65	16,14	15,69	15,31	14,93	14,62	14,48	13,96
0						17,05	17,05	17,05	17,05	16,56	15,98	15,56	15,14	14,79	14,52	14,24
-5						17,05	17,05	17,05	17,05	16,94	16,30	15,76	15,31	14,93	14,58	14,44
-10						17,05	17,05	17,05	17,05	17,05	16,56	16,06	15,49	15,08	14,66	
-15						17,05	17,05	17,05	17,05	17,05	16,84	16,22	15,69	15,19	14,75	
-20					17,05	17,05	17,05	17,05	17,05	17,05	17,05	16,39	15,83	15,31	14,79	
-25					17,05	17,05	17,05	17,05	17,05	17,05	17,05	16,56	15,91	15,37	14,84	
-30				17,05	17,05	17,05	17,05	17,05	17,05	17,05	17,05	16,65	15,98	15,37	14,79	
-35			16,77	17,05	17,05	17,05	17,05	17,05	17,05	17,05	17,05	16,65	15,98	15,31		
-40	15,06	15,28	15,93	17,05	17,05	17,05	17,05	17,05	17,05	17,05	17,05	16,65	15,91	15,25		
-45	14,44	15,28	16,41	17,05	17,05	17,05	17,05	17,05	17,05	17,05	17,05	16,56	15,83			
-50		15,65	16,96	17,05	17,05	17,05	17,05	17,05	17,05	17,05	17,05	16,39	15,62			
-55		16,24	17,05	17,05	17,05	17,05	17,05	17,05	17,05	17,05	17,04	16,14				
-60			17,05	17,05	17,05	17,05	17,05	17,05	17,05	17,05	16,65					
-65				17,05	17,05	17,05	17,05	17,05	17,05	17,05						



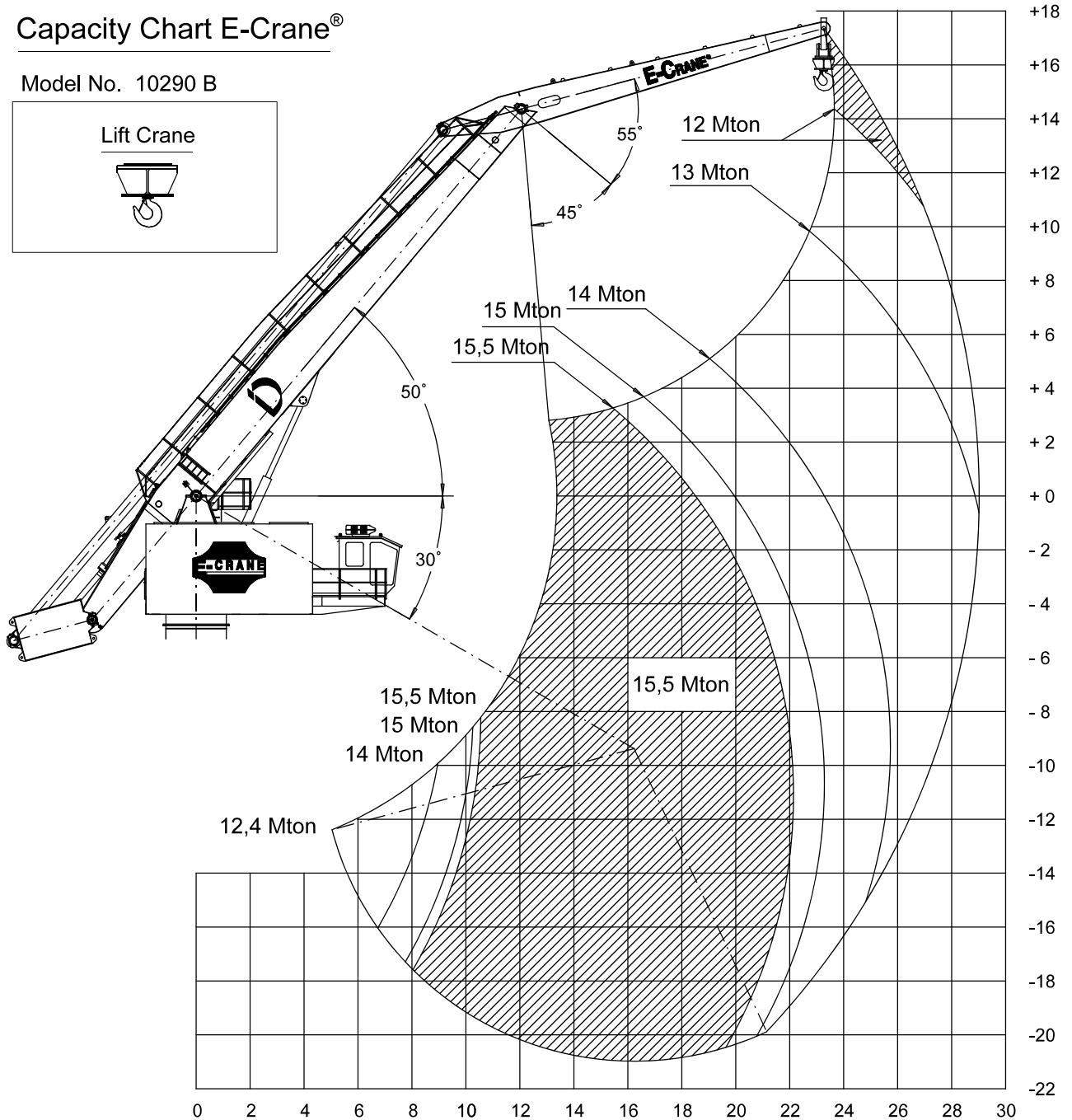


**Load Chart (Mton/m)**

**Capacity Chart E-Crane®**

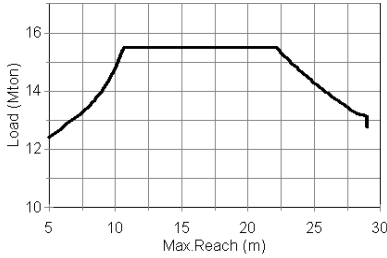
Model No. 10290 B

Lift Crane



Docnr.: ALI2005-027

HEIGHT Relative to BOOM- PIN (m)	CAPACITY CHART (Mton) / Lift Crane Operation															
	E-Crane 10290 B															
	REACH (m)															
	6,5	8	9,5	11	12,5	14	15,5	17	18,5	20	21,5	23	24,5	26	27,5	29
15													12,00			
13,5													12,00			
12													12,09	12,00		
10,5												12,69	12,37	12,09		
9												13,12	12,77	12,32	12,03	
7,5											13,26	13,19	13,12	12,69	12,22	
6										13,49	13,26	13,18	13,11	12,48		
4,5									14,27	13,97	13,71	13,45	13,22	13,17	12,85	
3							15,50	15,06	14,67	14,27	13,97	13,66	13,41	13,20	13,12	
1,5						15,50	15,50	15,50	15,06	14,60	14,20	13,86	13,57	13,29	13,17	
0						15,50	15,50	15,50	15,49	14,98	14,53	14,08	13,76	13,41	13,19	12,94
-1,5						15,50	15,50	15,50	15,50	15,31	14,75	14,33	13,92	13,57	13,22	
-3						15,50	15,50	15,50	15,50	15,50	15,06	14,53	14,08	13,66	13,33	
-4,5						15,50	15,50	15,50	15,50	15,50	15,22	14,67	14,20	13,76	13,37	
-6					15,50	15,50	15,50	15,50	15,50	15,50	15,49	14,82	14,33	13,86	13,45	
-7,5					15,50	15,50	15,50	15,50	15,50	15,50	15,50	14,98	14,39	13,92	13,45	
-9				15,50	15,50	15,50	15,50	15,50	15,50	15,50	15,50	15,06	14,46	13,92	13,45	
-10,5			15,42	15,50	15,50	15,50	15,50	15,50	15,50	15,50	15,50	15,06	14,46	13,92		
-12	13,89	13,99	14,76	15,50	15,50	15,50	15,50	15,50	15,50	15,50	15,50	15,06	14,46	13,86		
-13,5	13,27	13,99	15,07	15,50	15,50	15,50	15,50	15,50	15,50	15,50	15,50	14,98	14,33			
-15	13,60	14,48	15,50	15,50	15,50	15,50	15,50	15,50	15,50	15,50	15,50	14,90	14,20			
-16,5		14,91	15,50	15,50	15,50	15,50	15,50	15,50	15,50	15,50	15,40	14,67				
-18			15,50	15,50	15,50	15,50	15,50	15,50	15,50	15,50	15,14					
-19,5				15,50	15,50	15,50	15,50	15,50	15,50	15,50						



## SPECIFICATIONS

	<i>Specifications English (**)</i>	<i>Specifications Metric (**)</i>
<b>Operating Range:</b>		
Minimum Outreach Range (from centerline of rotation)	16'-6.1/4"	5,035 m
Maximum Outreach (from centerline of rotation)	95'-3"	29,032 m
Downreach Range (below main boom pivot point)	68'-9.13/16"	20,975 m
Lifting Range (vertical lift)	125'-10.1/8"	38,357 m
Boom Operating Angles (above and below horizontal)	+50°/-30°	+50°/-30°
Stick Operating Angles (befor and after vertical)	+55°/-45°	+55°/-45°
Degrees of Rotation	360° continuous	360° continuous
<b>Power:</b>		
Power Supply	3-Phase 480 Volts AC, 60 Hz	3-Phase, 380 Volts AC, 50 Hz
Electrical Motor	300 hp	200 kW (opt. 225 kW)
Hydraulic Pump Output		
Implement	211 gpm	800 L/min
Swing	77,4 gpm	293 L/min
Hydraulic System Relief Setting	3,990 psi	27.500 kPa
Hydraulic Tank Refill Capacity	489 USgal	1.850 L
<b>Dimensions:</b>		
Boom Length	61'-6.3/16"	18,75 m
Stick Length	38'-11/16"	11,6 m
<b>Total Weight Superstructure<sup>(*)</sup></b>	349,800 lbs	159.000 kg

(\*) Operating weight does not include lubricants, hydraulic oil, bucket and operator

(\*\*) Materials and specifications are subject to change without notice.

See your E-Crane<sup>™</sup> dealer for available options.

Alle rechten voorbehouden. Niets uit deze uitgave mag worden veeveelvoudigd, opgeslagen in een geautomatiseerd gegevensbestand, of openbaar gemaakt, in enige vorm of op enige wijze, hetzij elektronisch, mechanisch, door fotocopiëren, opnamen of enige andere manier, zonder voorafgaande schriftelijke toestemming van nv Indusign (België).

All rights reserved. No part of this publication may be reproduced, stored in a retrieval system, or transmitted, in any form or by any means, electronic, mechanical, photocopying, recording or otherwise without the written permission of nv Indusign (Belgium).

Alle Rechte vorbehalten. Nachdruck, Aufnahme in ein Retrieval-System, jedwede elektronische, mechanische, fotokopierte, oder andere Übertragung, auch auszugsweise, ist ohne ausdrücklicher, schriftlicher Genehmigung von nv Indusign (Belgien) verboten.

Ce manuel ne peut en aucune façon être copié, sans autorisation écrite du firme nv Indusign (Belgique).