



# xP800

Medium-Heavy Range

## Productivity (mq in 8 hours)

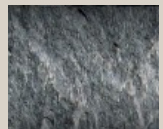
Hard rock, Compact basalt, Limestone.

**90min / 260max**



Medium-hard rock, Slate, Non-omogeneous granite.

**130min / 390max**



Concrete non reinforced stratified limestone, tuff.

**180min / 500max**



## Technical Specification

Working weight	750 Kgs
Carrier's weight min/max	9/15 ton
Total height	2250 mm
Tool diameter	100 mm
Useful length of standard tools	520 mm
Oil flow min/max	90/110 l/min
Working pressure min/max	165/175 bar
Blows per minute	538/720 1/min
Impact energy	3602 joule

## Size Compatibility



MINI LOADER



BACKHOE LOADER



COMPACT EXCAVATOR



CRAWLER EXCAVATOR



WHEELED EXCAVATOR