

xP600

Medium-Heavy Range

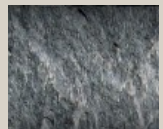


Productivity (mq in 8 hours)

Hard rock, Compact basalt, Limestone.
170min / 490max



Medium-hard rock, Slate, Non-omogeneous granite.
120min / 350max



Concrete non reinforced stratified limestone, tuff.
80min / 250max



Technical Specification

Working weight	600 Kgs
Carrier's weight min/max	7/13 ton
Total height	1950 mm
Tool diameter	90 mm
Useful length of standard tools	490 mm
Oil flow min/max	80/100 l/min
Working pressure min/max	130/150 bar
Blows per minute	370/550 l/min
Impact energy	1917 joule

Size Compatibility



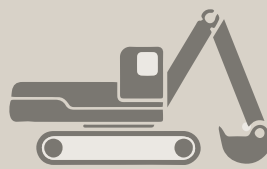
MINI LOADER



BACKHOE LOADER



COMPACT EXCAVATOR



CRAWLER EXCAVATOR



WHEELED EXCAVATOR