

xP2000

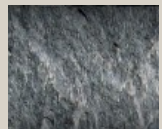
Medium-Heavy Range

Productivity (mq in 8 hours)

Hard rock, Compact basalt, Limestone.
190min / 530max



Medium-hard rock, Slate, Non-omogeneous granite.
240min / 800max



Concrete non reinforced stratified limestone, tuff.
380min / 1100max



Technical Specification

Working weight	1950 Kgs
Carrier's weight min/max	22/29 ton
Total height	3000 mm
Tool diameter	145 mm
Useful length of standard tools	675 mm
Oil flow min/max	170/190 l/min
Working pressure min/max	180/190 bar
Blows per minute	307/523 1/min
Impact energy	7878 joule

Size Compatibility



MINI LOADER



BACKHOE LOADER



COMPACT EXCAVATOR



CRAWLER EXCAVATOR



WHEELED EXCAVATOR